

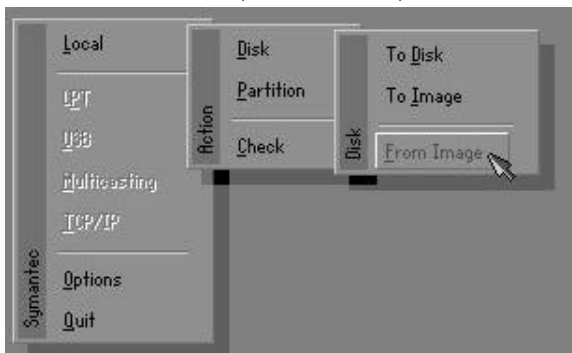
# How to use your Cyber Exchange Inc Restore CD.

Disc Type: 1

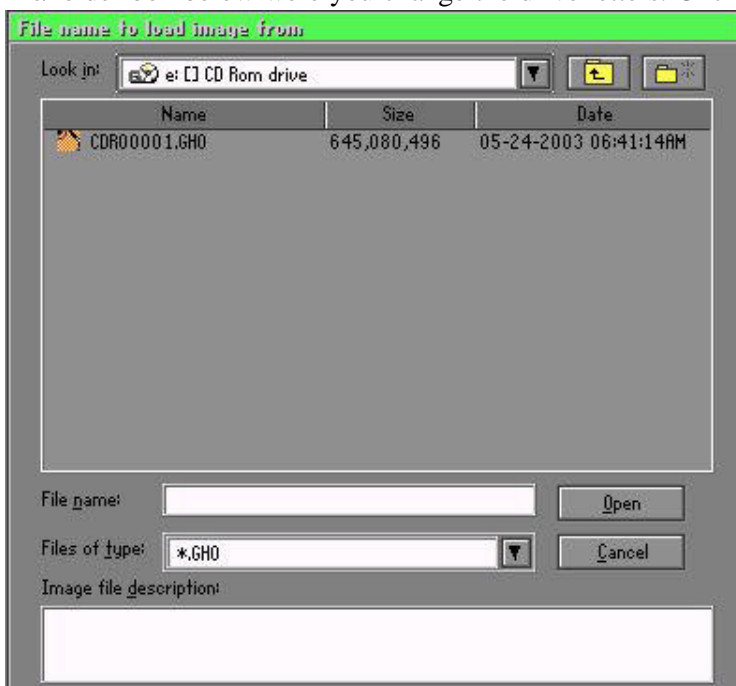
**WARNING! IF YOU RUN THE RESTORE CD ALL THE INFORMATION ON YOUR HARD DRIVE WILL BE PERMANENTLY OVER WRITTEN!**

## Step by Step instructions on how to run the restore:

1. Put the Restore CD into the CD-ROM drive. If the system boots to Windows or you are already in Windows, reboot the computer and it should boot from the Restore CD.
2. It will boot straight to Norton Ghost. Click the ok button on the splash screen (first screen).
3. Click on "Local", then "Disk", then "From Image". As shown in the picture below.



4. A dialog box will come up asking what image you want to load. It defaults to showing what is on A:. Click the white area next to "Look in:" until you get to the CD-ROM drive that has the Restore CD in it. It will probably be the D: drive. A file that starts with CDR and ends with a .GHO extension will be in the file/folder box below where you change the drive letters. Click on the file.



## How to use your Cyber Exchange Inc Restore CD.

5. A dialog box with a title “Select local destination drive by clicking on the drive number” will appear, click on the first drive (drive 1) and then click ok.
6. A new dialog box comes up with the title, “Destination Drive Details”. Click on the first drive, then click ok.
7. It will prompt you asking, “Proceed with disk load? Destination will be permanently overwritten”. If you want to restore windows to the way it was when the machine was purchased and you don't need any of the information on the hard drive click yes.

The restore has now started. It will take about 30-45 mins (maybe more, maybe less) to complete the system restore. Do not turn the computer off or try to stop the restore. If it is stopped for some reason it will not boot off the Hard drive correctly. You must just start from the beginning and perform all the steps over again.

Once it has fully restored windows, a prompt will come up saying, “Clone completed successfully” with two buttons. Take the Restore CD out and then click the “Restart Computer” button. When the computer boots back up it will prompt you for the “Product Key” for Windows. The sticker with your Windows Product Key should be on the outside of your case. The rest should be fairly self explanatory. Just follow the on screen instructions.